

WOODBADGE TRAINING PROGRAM



The Woodbadge Training Program consists of Basic and Advanced level training. The Basic Training will normally be completed within twelve months of entry into the Movement. The Advanced Level should be completed within three years.

Note:

- For all new Leaders, In-Service Training and Technical Skills training will depend very heavily on District Leaders and Personal Leader Advisers. The technical training task sheets and skills learned in the District and 'on the job' will be revised and used during Basic Level Sectional Techniques Courses.
- A Woodbadge in the relevant section is the necessary requirement for appointment as a Section Leader.

WOODBADGE TRAINING PROGRAM				
	Leader of Youth	Rovers	Leader of Adults	Activity Leader
B A S I C	<ul style="list-style-type: none"> - Introduction to Scouting Seminar - In-Service - Technical Tasks - Leader of Youth Basic Common Core Course - Basic Sectional Techniques Course 	<ul style="list-style-type: none"> - Introduction to Rovers Seminar - In-Service - Technical Tasks - Leader of Youth Basic Common Core Course - Basic Sectional Techniques Course 	<ul style="list-style-type: none"> - Introduction to Scouting Seminar - In-Service - Technical Tasks - Leader of Adult Basic Common Core Course - Group Leader or Commissioner/District Leader Basic Course 	<ul style="list-style-type: none"> - Introduction to Scouting Seminar - In-Service - Technical Tasks - Leader of Youth Basic Common Core Course - Activity Guide Course - Training of Trainers - Training Methods - Level 2 First Aid Course - Basic Leadership Workbooks
Certificate of Adult Leadership and Certificate of Adult Appointment (Gilwell Woggle)				
A D V A N C E D	<ul style="list-style-type: none"> - Leader of Youth Advanced Common Core Course - Advanced Outdoor Activities Course - Advanced Sectional Techniques course - Application and Evaluation - Advanced Leadership Workbooks 	<ul style="list-style-type: none"> - Leader of Youth Advanced Common Core Course - Advanced Sectional Techniques course - Application and Evaluation - Advanced Leadership Workbooks 	<ul style="list-style-type: none"> - Leader of Adults Advanced Course - Advanced Course module Worksheets - Application and Evaluation - Training of Trainers – Personal Leader Adviser (DL/Comm only) - Advanced Leadership Workbooks 	<ul style="list-style-type: none"> - Leader of Youth Advanced Common Core Course - Activity Instructor Course - Advanced Specialist Course - Application and Evaluation - Training of Trainers - Assessor Course - Advanced Leadership Workbooks
Certificate of Advanced Adult Leadership (Woodbadge), Certificate IV in Frontline Management and Certificate IV in Leadership (if L2 First Aid Qualification held)				
On-Going:	One Personal Development Unit/Elective course completed at least every 12 months			

The components of the Woodbadge Training Program are:

1. Introduction to Scouting Seminar - Basic Level Training:

Common to all New Leaders. A course of three hours duration held on a weeknight or Saturday or Sunday afternoon. It covers the needs of young people, the fundamentals of Scouting, and the Leader's commitment. This is the only training that can be completed prior to receiving the Certificate of Adult Membership.

Introduction to Rovers Seminar - Basic Level Training:

Common to all New Rovers. A course of three hours duration held on a weeknight or Saturday or Sunday afternoon. It covers the needs of Rovers, the fundamentals of Scouting, and the Rover's commitment.

2. In-Service - Basic Level Training:

For Leaders of Youth, eight weeks In-Service Training with the appropriate Section within a Scout Group, under the supervision of a Personal Leader Adviser appointed by the District Leader (sectional) in conjunction with the District Leader (Adult Training Support). This training should commence without delay. All requirements for In-Service and Technical Training Tasks will be in the In-Service Workbook.

For Leaders of Adults and Activity Leaders, an In-Service program of eight weeks is completed with the guidance of the Personal Leader Adviser.

For Rovers, an In-Service program is completed with the Crew.

3. Technical Training Tasks - Basic Level Training:

Skills in Basic Mapping and Compass work, Basic Emergencies, Section Administration, Knotting and Lashings are outlined in the Technical Training Tasks sheets and should be mastered, with the assistance of the Personal Leader Adviser, District Leaders and/or Group Leader, and will be used during Basic Sectional Techniques training courses.

Within some Districts and Regions, Skills training days are conducted to assist with the development of these essential skills. The assessment of the attainment of the skill competency is completed by the Personal Leader Adviser.



4. Leader of Youth Basic Common Core Course:

The Introduction to Scouting / Rovers Seminar and Technical Tasks must be completed **before** a Leader of Youth Basic Common Core Course is attempted.

Leader of Youth Basic Common Core Course is a combined course for Joey Scout, Cub Scout, Scout, Venturer Scout, Rovers and Rover Advisers and Activity Leaders and is two days duration and may be either a residential or non-residential weekend.

The course is designed to cover the fundamentals of the Movement and technical skills, with emphasis on reasons why Leaders carry out their various roles.

5. Leader of Adult Basic Common Core Course:

The Introduction to Scouting / Rovers Seminar and Technical Tasks must be completed **before** a Leader of Adults Basic Common Core Course is attempted.

Leader of Adult Basic Common Core Course is one day duration and is generally non-residential.

The course is designed to cover the fundamentals of the Movement and technical skills, with emphasis on reasons why Leaders carry out their various roles and the support requirements that Leaders of Adults provide.

7. Basic Sectional Techniques Training for Leaders of Youth:

Basic Sectional Techniques courses for Joey Scout, Cub Scout, Scout, Venturer Scout Leaders, Rovers and Rover Advisers are two days duration and will generally be a residential weekend.

The course is designed to develop a continuous improvement in the skills of training young people, with emphasis on reasons why Leaders carry out their various roles.

Activity Leaders will complete basic Sectional techniques training covering Specialised Activities and Adventurous Activities, as well as the Training of Trainers - Training Methods (or equivalent) program. (The Basic Specialist Course can be completed by youth members 14.5 years of age and older and Leaders to receive a Participant Qualification)

8. Basic Sectional Techniques Training for Leaders of Adults:

Basic Sectional Techniques courses for Group Leaders, District leaders and Commissioners one day duration and is generally non-residential.

The Basic Sectional Techniques course for Leader of Adults is designed to build on the management skills required by the Leader of Adults.

9. Assessment Activities - Basic Level Training:

All Leaders, as an integral part of their Basic training, are required to complete a range of assessment activities which are recorded in Workbooks that are issued at various points throughout the training program. A Leader will receive a Certificate of Adult Leadership and Certificate of Adult Appointment at the completion of their Basic training. Leaders undertaking Activity Guide training are required to submit

their workbooks for assessment. However, all other Leaders are encouraged to submit their Workbooks for assessment through the Personal leader Adviser, to the Scout Service Centre. Once assessed, a Leader or Rover may receive a Certificate III in Frontline Management and a Certificate III in Leadership Support if they hold a current Level 2 First Aid qualification.

10. Leader of Youth Advanced Common Core Training:

It is essential that Leaders have a minimum of six months post-Basic course experience, before applying for the Advanced Leader of Youth Advanced Common Core Course.

Leader of Youth Advanced Common Core Course is a combined course for Joey Scout, Cub Scout, Scout, Venturer Scout, Rovers and Rover Advisers and Activity Leaders and is two days duration and may be either a residential or non-residential weekend.

This course concentrates on aspects of youth development and fundamentals of the Movement.

11. Leader of Youth Advanced Outdoor Activities Training:

This section based two-day course will concentrate on practical outdoor activities for youth members. It may be undertaken any time after a Leader has completed Basic Training, providing the Leader has a Certificate of Adult Appointment.

Pack Holiday and Camping under Canvas content is included in the Cub Scout Outdoor Activities Advanced courses. This is a requirement for any Cub Scout Leader wishing to lead a Pack Holiday.

Rovers, Rover Advisors and Activity Leaders do not complete an Outdoor Activities course.

12. Leader of Youth Advanced Sectional Techniques Training:

It is essential that Leaders have completed the Leader of Youth Advanced Common Core training and have had minimum of six months post Basic training experience before attending the Leader of Youth Advanced Sectional Techniques Course.

The Advanced Sectional Techniques courses for Joey Scout, Cub Scout, Scout, Venturer Scout and Activity Leaders are two days duration and will generally be a residential weekend. For Rovers and Rover Advisers the course is four days duration, generally residential over two weekends. (The Advanced Specialist Participant Course can be completed by youth members 14.5 years of age and older and Leaders who have a minimum of six months post Basic course experience.)

This course concentrates on aspects of youth development, related leadership skills, and advanced programming.

13. Leader of Adults Advanced Sectional Techniques Training:

The Advanced training is common to all Leaders of Adults. This consists of a 4 day residential or non-residential program, that can be completed a minimum of six months post-Basic course experience.

This course concentrates on aspects of youth and adult development, related leadership skills, and improved management skills.

14. District Evaluation: Application and Evaluation:

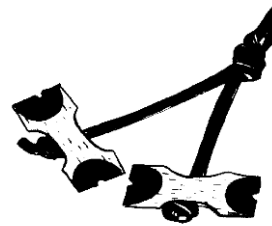
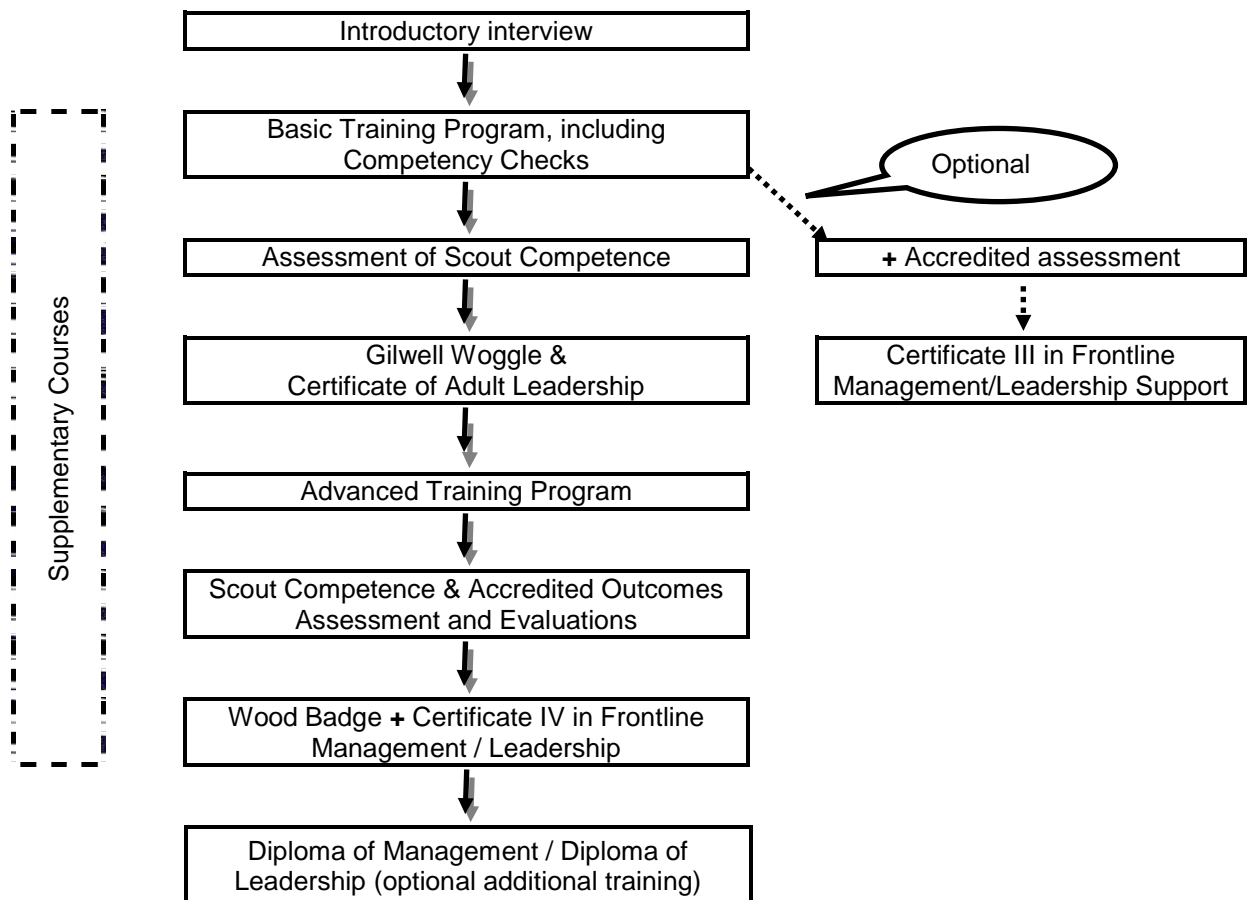
Over a minimum period of four months following completion of all Advanced training, a Leader's progress and application of Advanced training are observed and evaluated by the Leader and the District/Region Commissioner/Team Leader or his/her nominee. The Branch Commissioner for Adult Training and Development verifies Rover evaluations in consultation with the Assistant Region Commissioners – Rovers.

This evaluation can commence at any time after the Advanced training is completed.

15. Assessment Activities - Advanced Level Training:

All Leaders, as an integral part of their Advanced training, are required to complete a range of assessment activities which are recorded in Workbooks that are issued at various points throughout the training program. To receive a Certificate of Advanced Adult Leadership a Leader must complete their Advanced Pre-Course workbook, the Course Workbook and their Advanced Post Course Workbooks. Once completed these are submitted, through the Personal Leader Adviser, to Branch Headquarters for assessment. The exception to this is when a Leader completed Advanced Training previously with continuous service they do not have to resubmit their workbooks for assessment. Other exceptions are in operation, but these will be decided on a case-by-case basis with the Personal Leader Advisor.

This can all be summarised in the following table:



ELECTIVE TOPICS

A wide range of courses, designed to supplement the general training received through the Woodbadge scheme, may be offered. These courses provide knowledge relating to a specific appointment in the Movement, or give added insight into technical subjects and to enable a Leader to stimulate the interest of young people effectively. On completion of Advanced Training one unit must be completed yearly.